

# Cloud Classroom Management Software

## Installation Instruction

### Catalog

1.	Hmanager Installation Instruction.....	2
1.1	Installation Environment.....	2
1.2	Installation Steps.....	2
2.	Hserver Installation Instruction.....	7
2.1	Installation Environment.....	7
2.2	Installation Steps.....	7
3.	Hserver Installation Instruction.....	11
3.1	Installation Environment.....	11
3.2	Installation Steps.....	11

Three software are included in Cloud Classroom Management Software,Hmanager,Hteacher and Hserver. Hmanager and Hteacher are installed in one computer (Teacher side),Hmanager need to be installed in another computer (Server side).

Please strictly follow the installation sequence below:

Step 1 : Install Hmanager, static IP recommended

Step 2 : Install Hteacher

Step 3 : Install Hserver, static IP recommended

# 1. HManager Installation Instruction

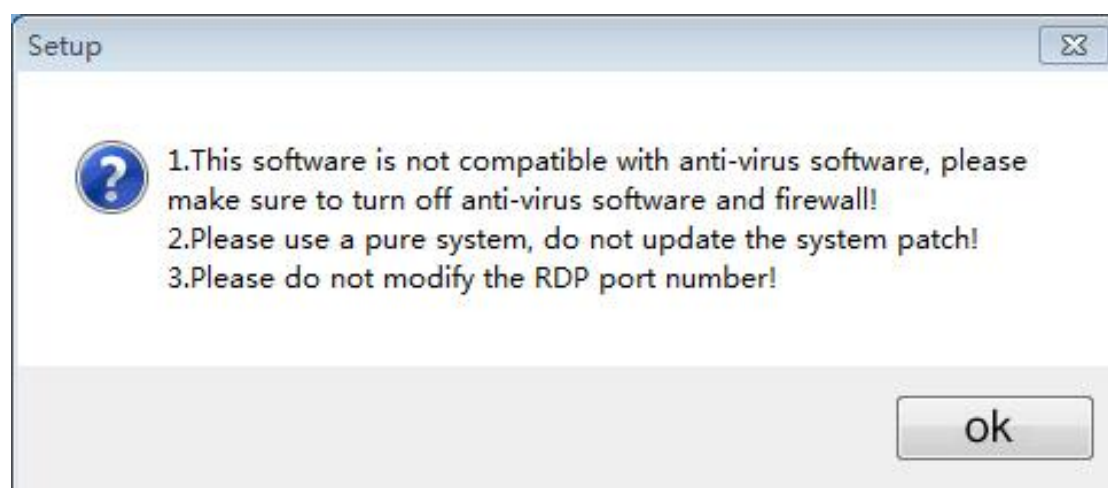
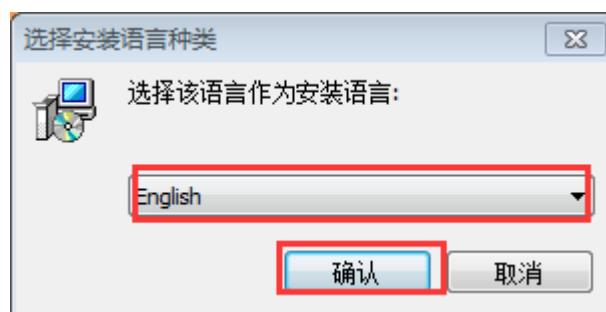
## 1.1 Installation Environment

Select and install Windows OS on teacher's computer as needed. Log in to the Administrator, and install Hmanager under the account. If it is not the first installation for Hmanager on the computer, please close or uninstall the old one before starting

## 1.2 Installation Steps

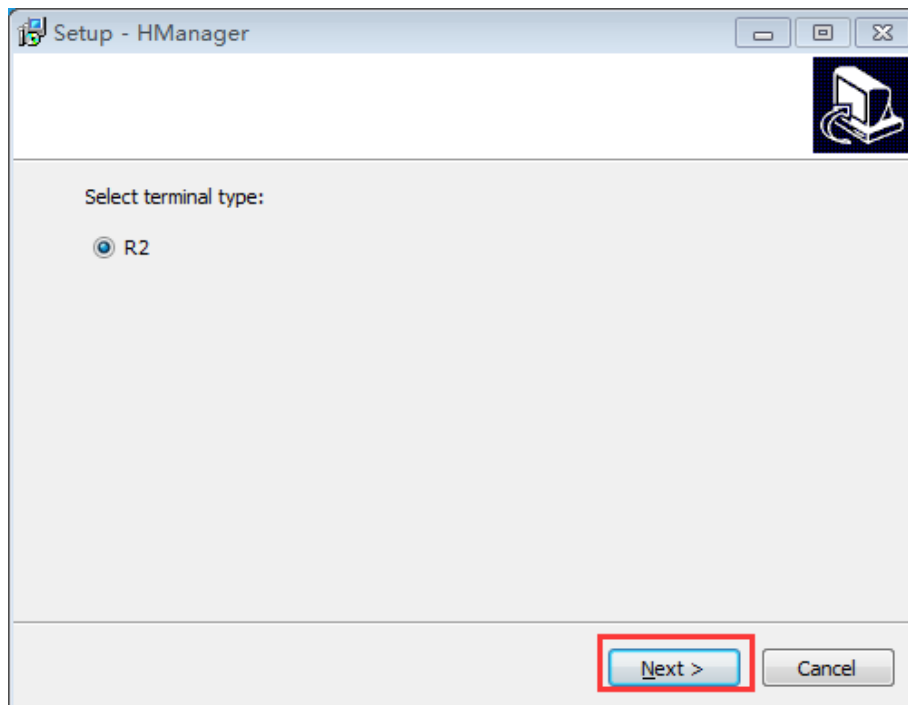
Select corresponding Installation package according Windows OS version. Take Windows 10 Ultimate 64bit as example.

It need super administrator privileges to install Hmanager. Please shutdown antivirus software and firewall before installation.

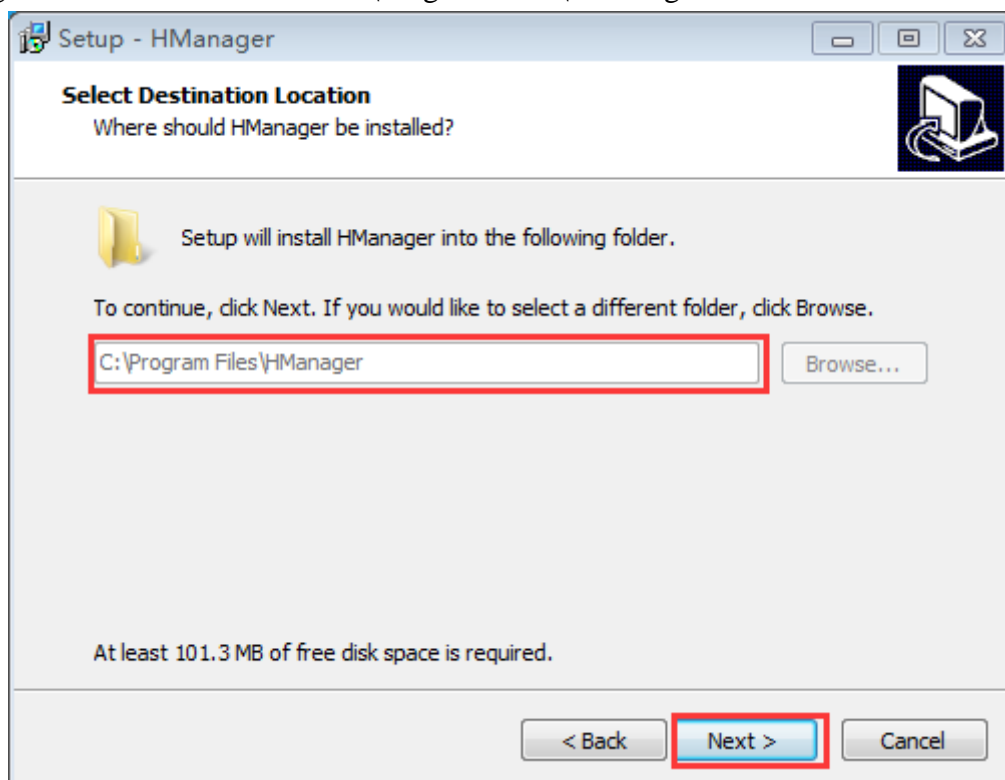


Select corresponding terminal type according to the product model(Only R2 at present), and click **Next**.

## Cloud Classroom Management Software Installation Instruction

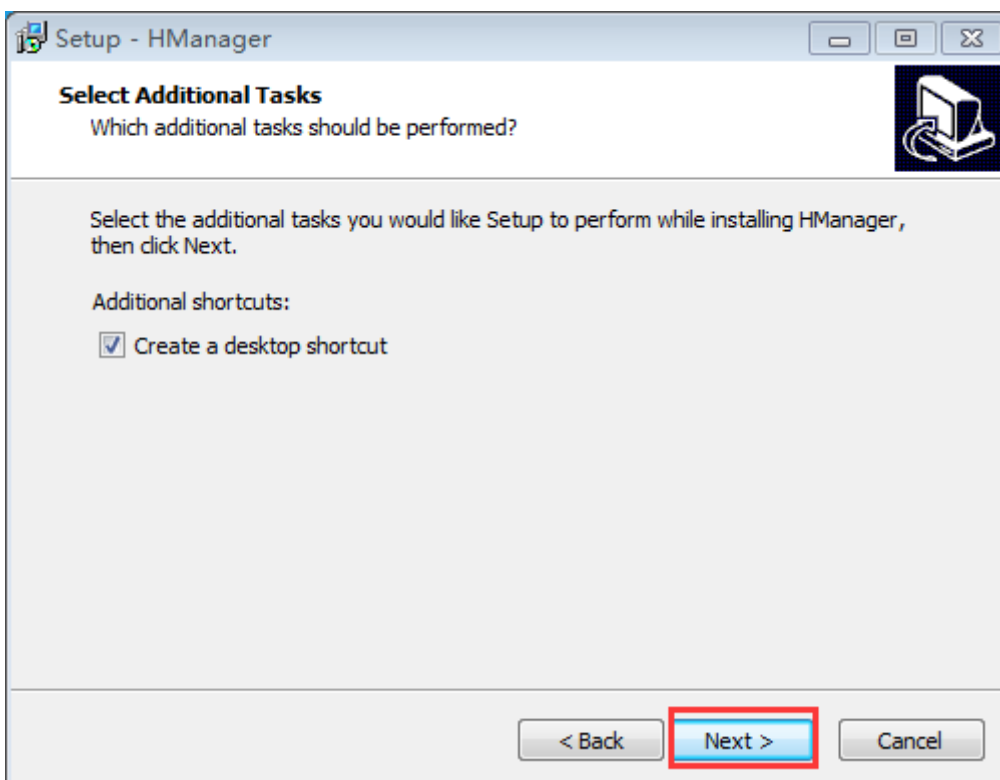
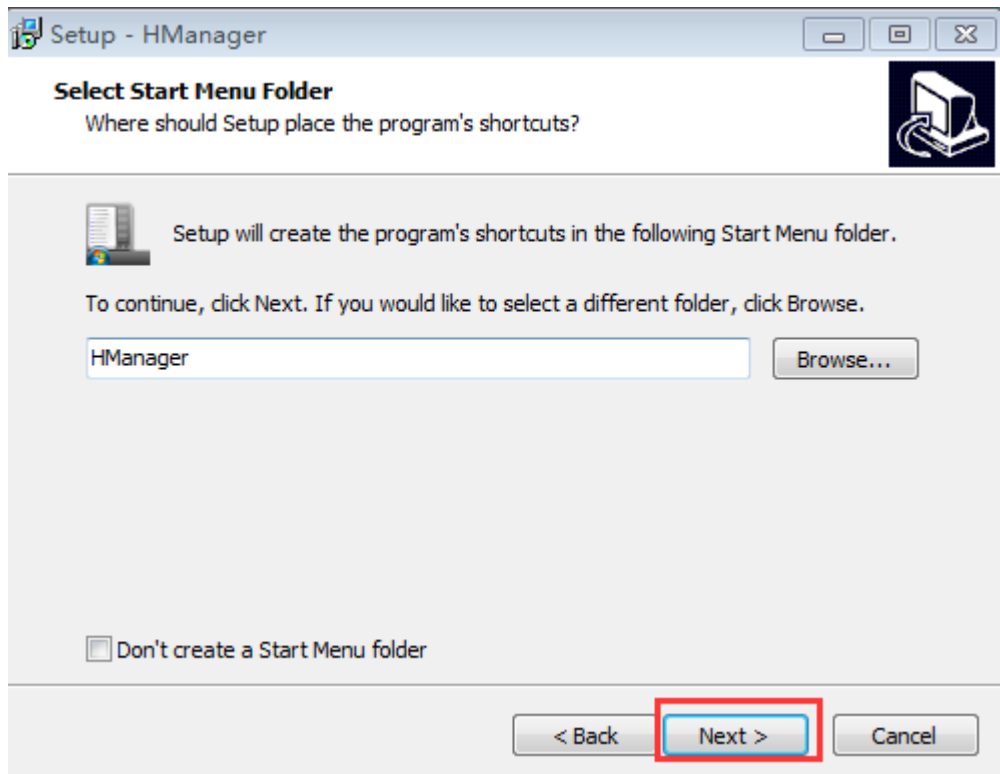


To make sure normal use of the software, the installation location cannot be changed. The default location is C:\Program Files\HManager folder. Click **Next**.



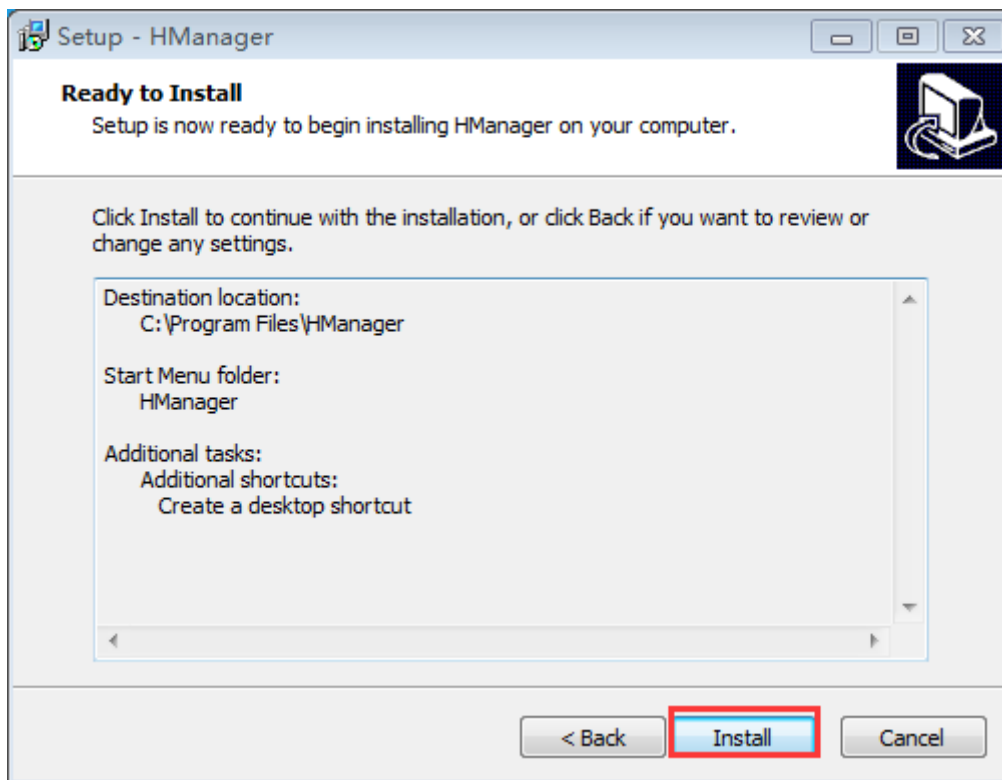
Folder will be created in the start menu by default, click **Next**, create a desktop shortcut by default, click **Next**.

## Cloud Classroom Management Software Installation Instruction

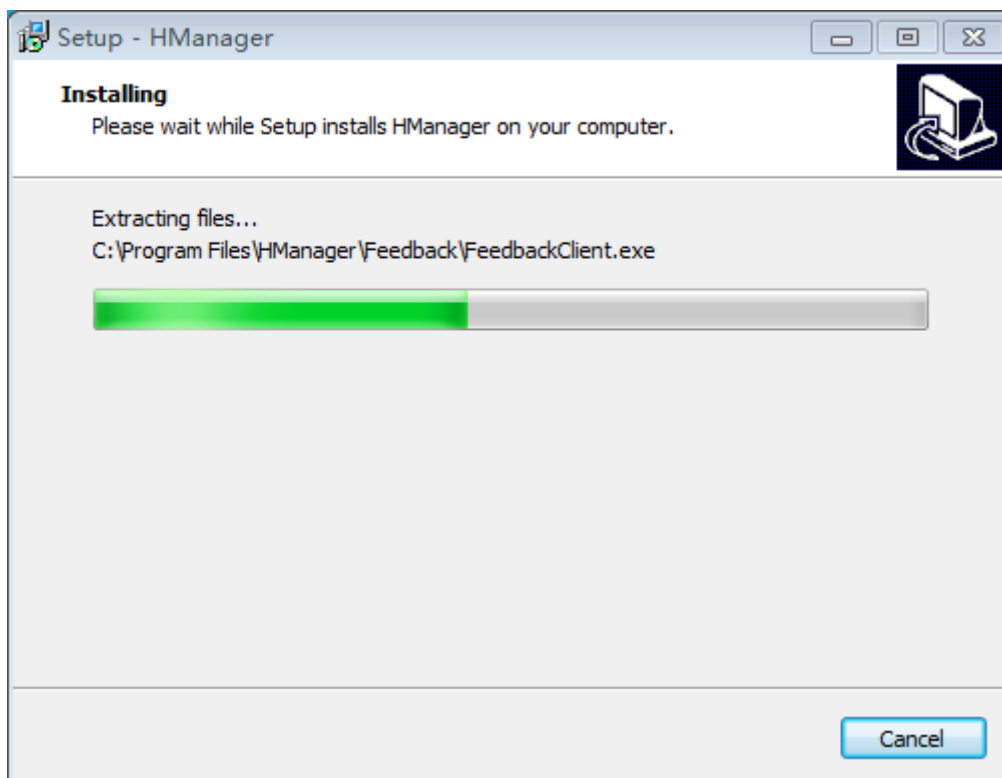


Click **Install**

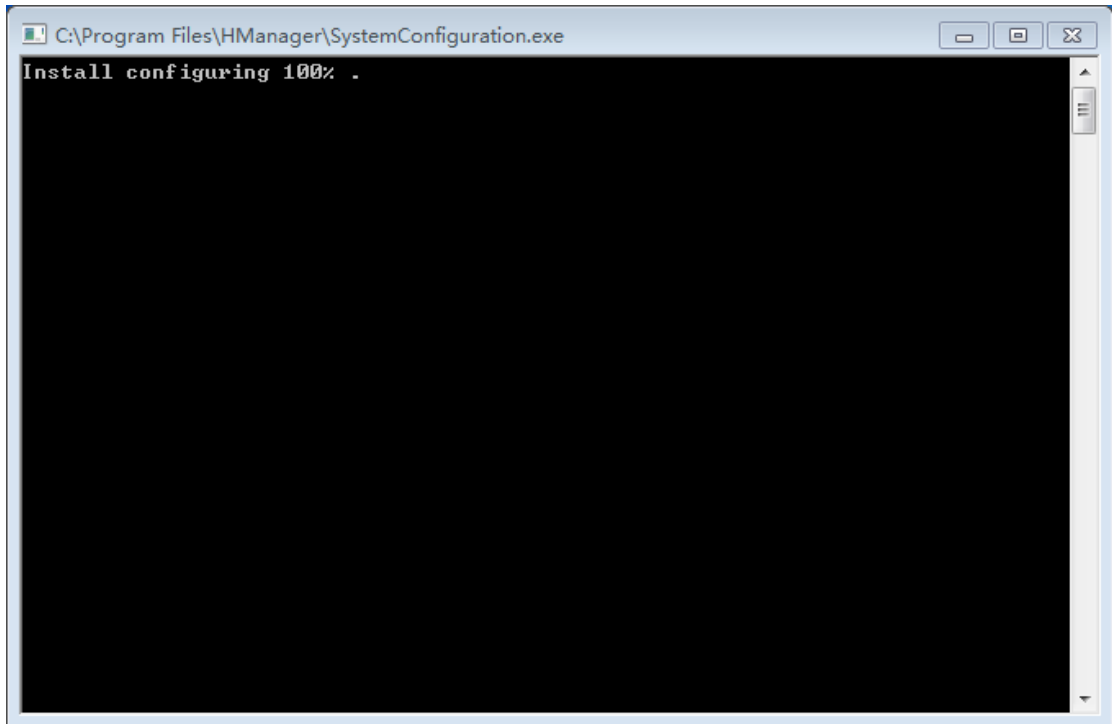
## Cloud Classroom Management Software Installation Instruction



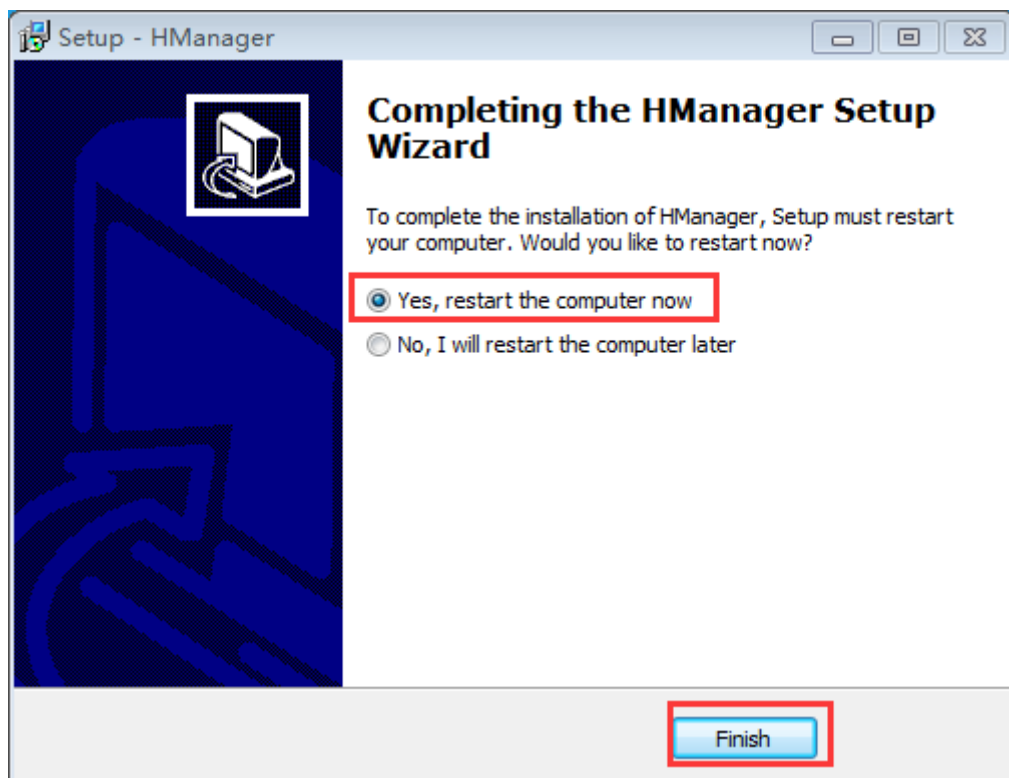
During the installation, there will be a pop-up window showing the installation progress.



## Cloud Classroom Management Software Installation Instruction



After completing the installation, it will restart by default, then click **Finish**



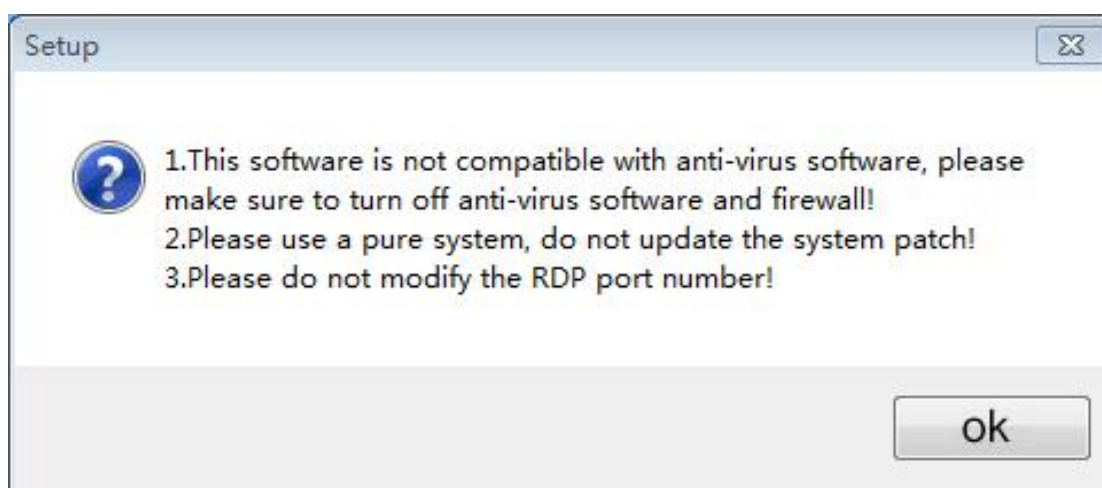
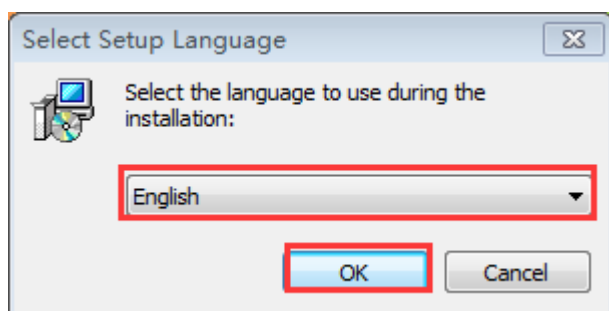
## 2.HTeacher Installation Instruction

### 2.1 Installation Environment

Select and install Windows OS on teacher's computer as needed. Log in to the Administrator, and install Hmanager under the account. If it is not the first installation for Hmanager on the computer, please close or uninstall the old one before starting .

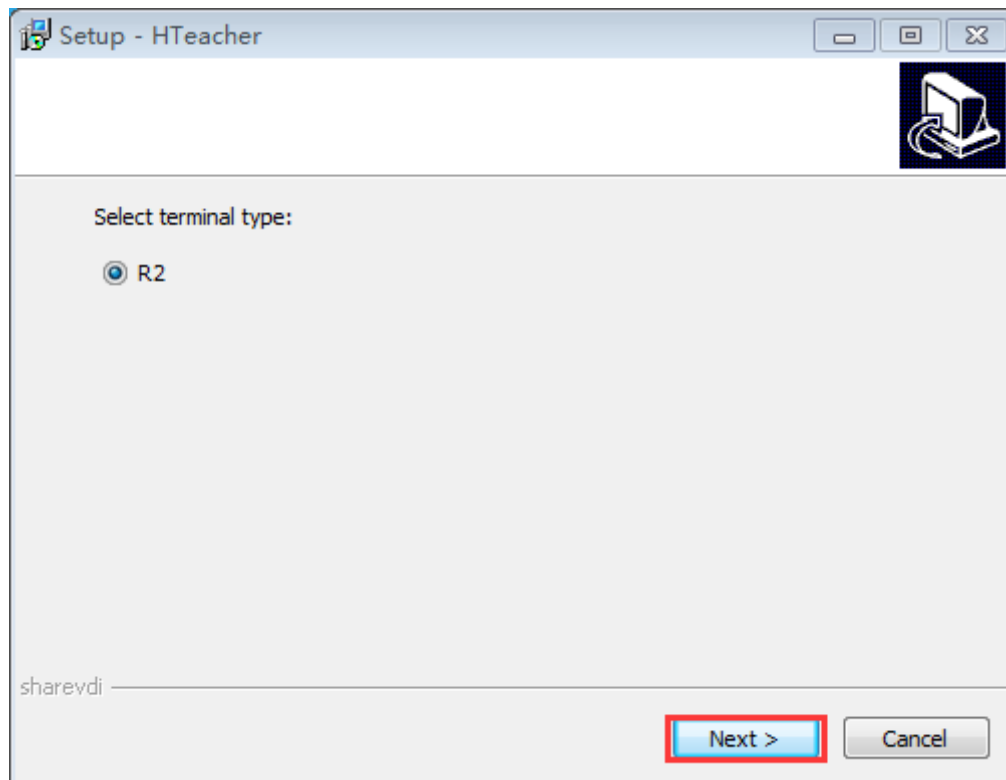
### 2.2 Installation Steps

Select corresponding Installation package according Windows OS version. Take Windows 10 Ultimate 64bit as example. It need super administrator privileges to install Hteacher. Please shutdown antivirus software and firewall before installation.

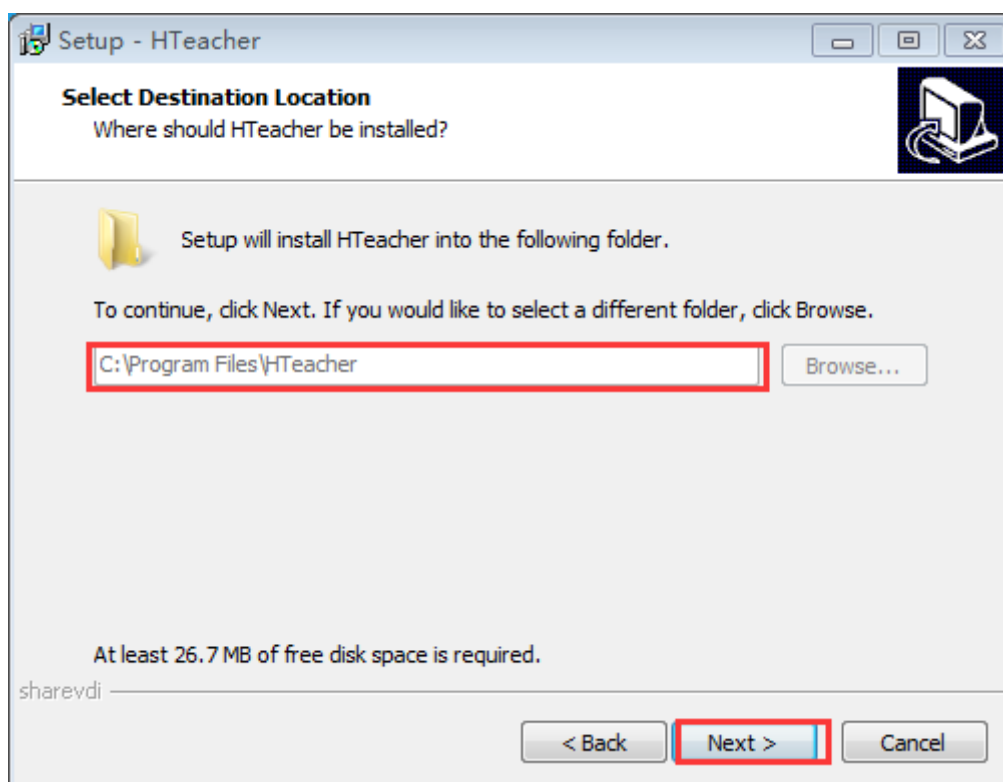


Select corresponding terminal type according to the product model(Only R2 at present), and click **Next**

## Cloud Classroom Management Software Installation Instruction



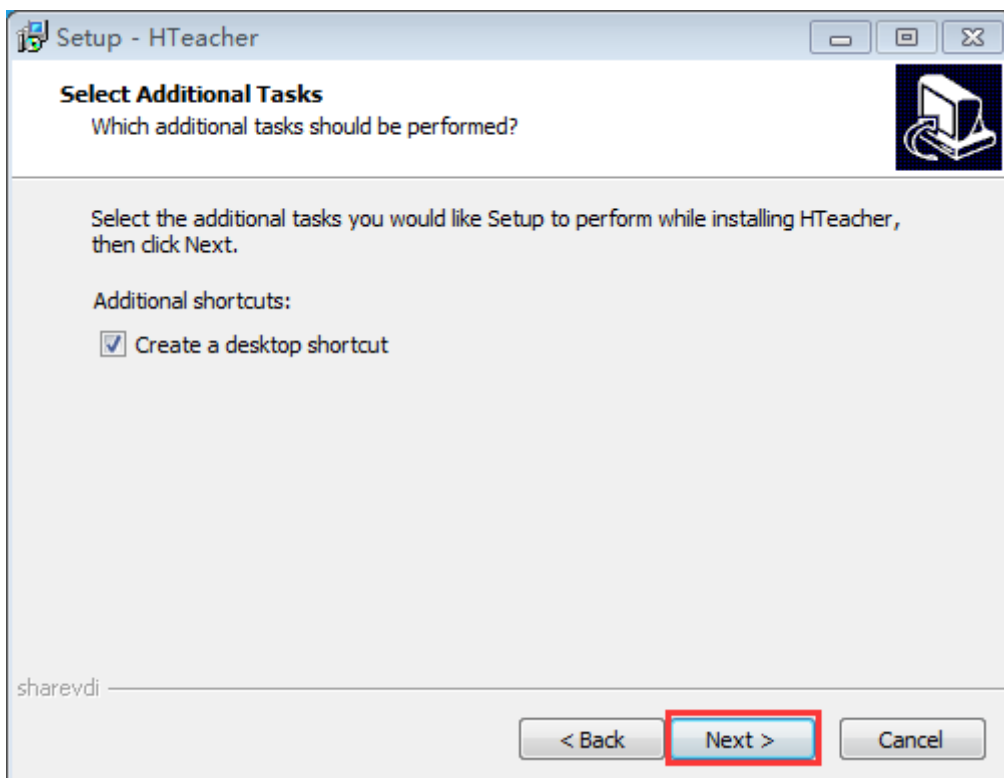
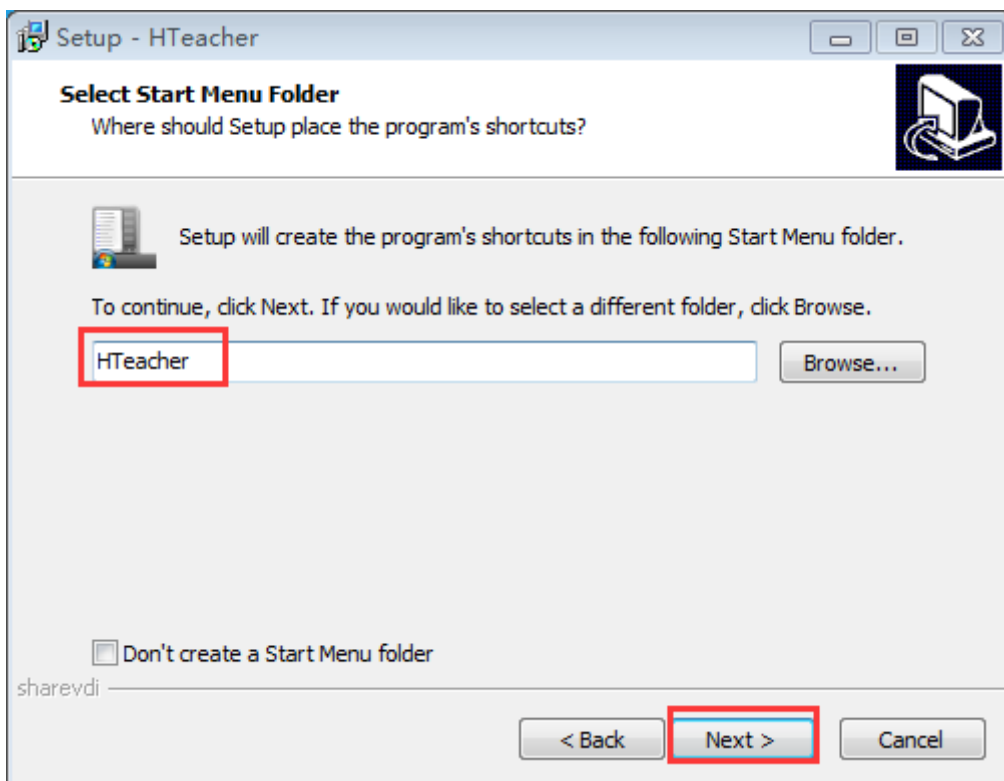
To make sure normal use of the software, the installation location cannot be changed. The default location is C:\Program Files\HManager folder. **Click Next.**



Folder will be created in the start menu by default, click **Next**, create a desktop shortcut by default, click **Next**.

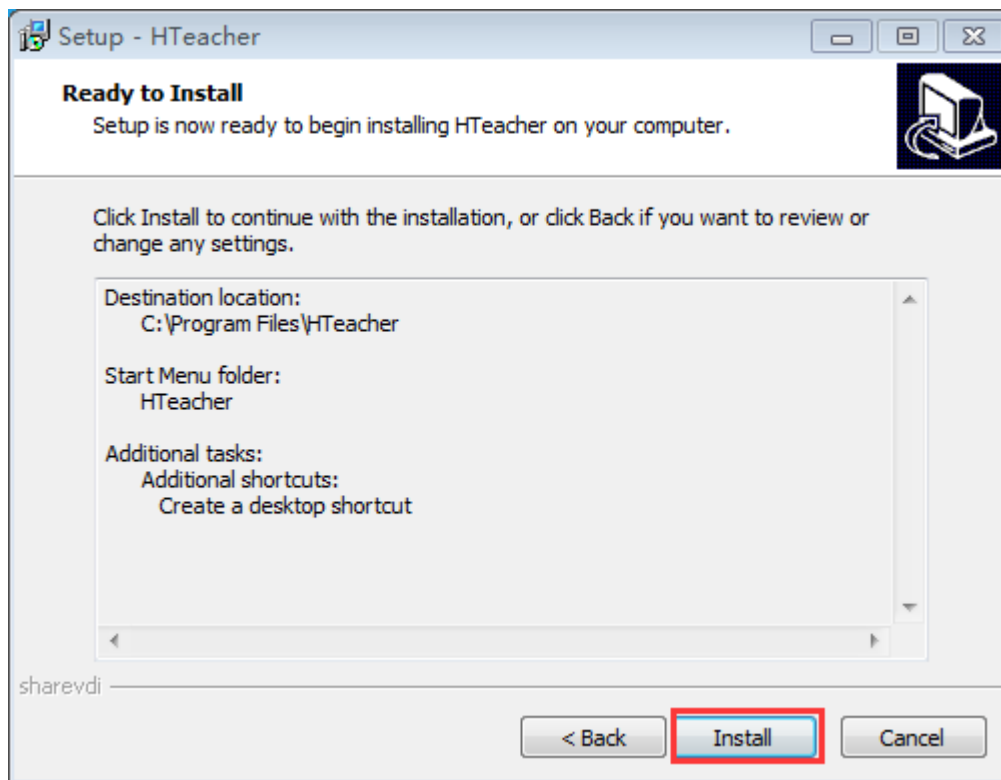


## Cloud Classroom Management Software Installation Instruction

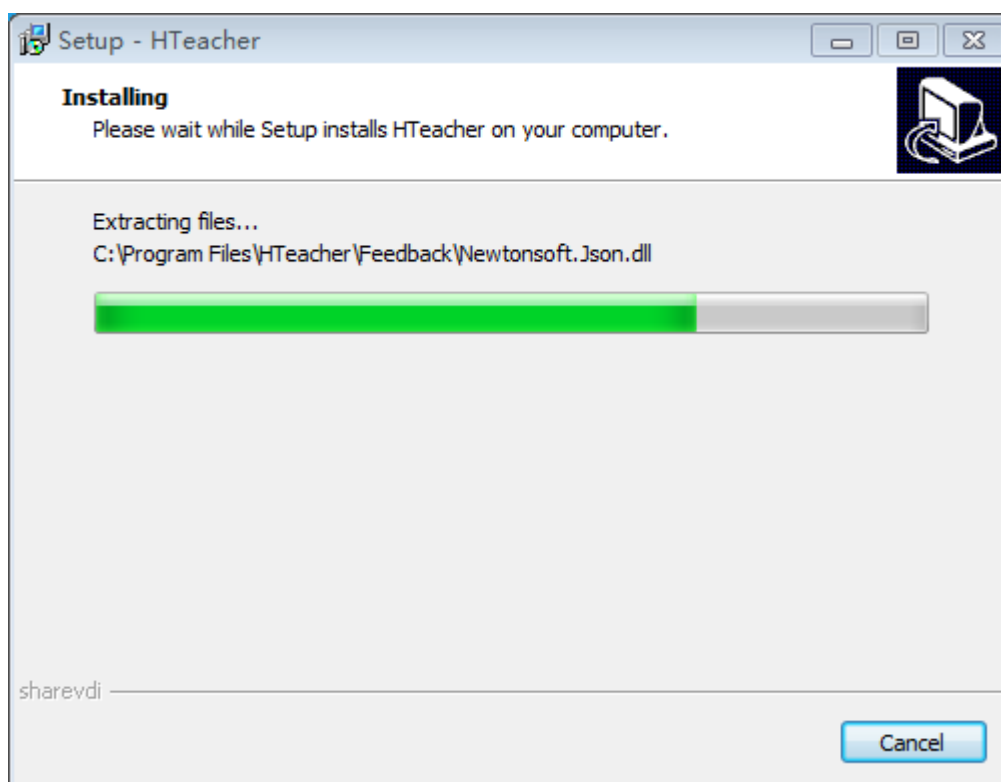


Click **Install**

## Cloud Classroom Management Software Installation Instruction

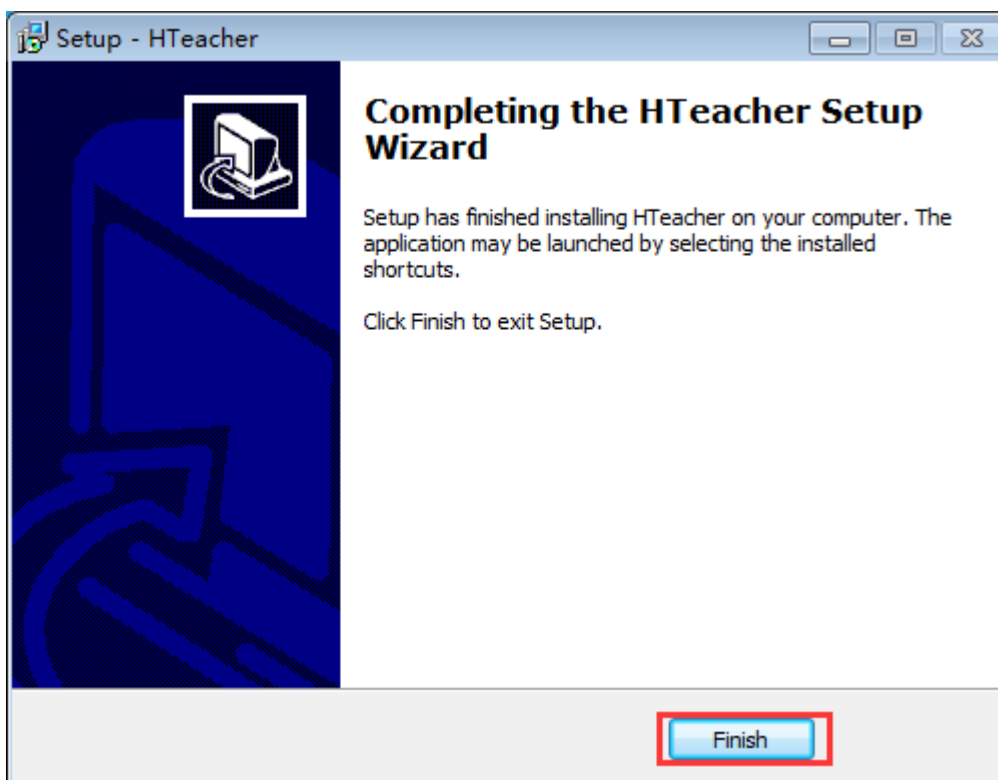


During the installation, there will be a pop-up window showing the installation progress.



After completing the installation, it will restart by default, then click **Finish**

## Cloud Classroom Management Software Installation Instruction



### 3.Hserver Installation Instruction

#### 3.1 Installation Environment

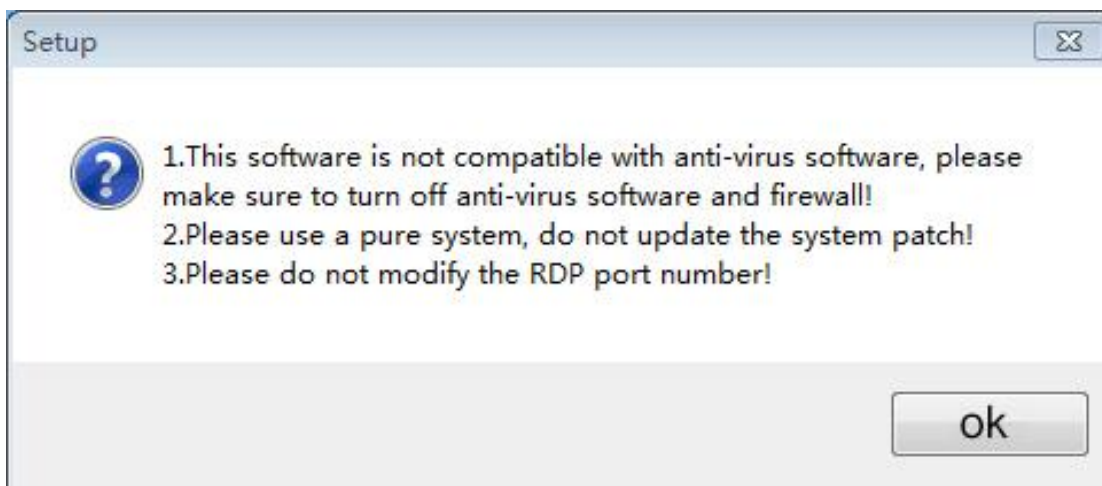
Select and install Windows OS on teacher's computer as needed. Log in to the Administrator, and install Hmanager under the account. If it is not the first installation for Hmanager on the computer, please close or uninstall the old one before starting.

#### 3.2 Installation Steps

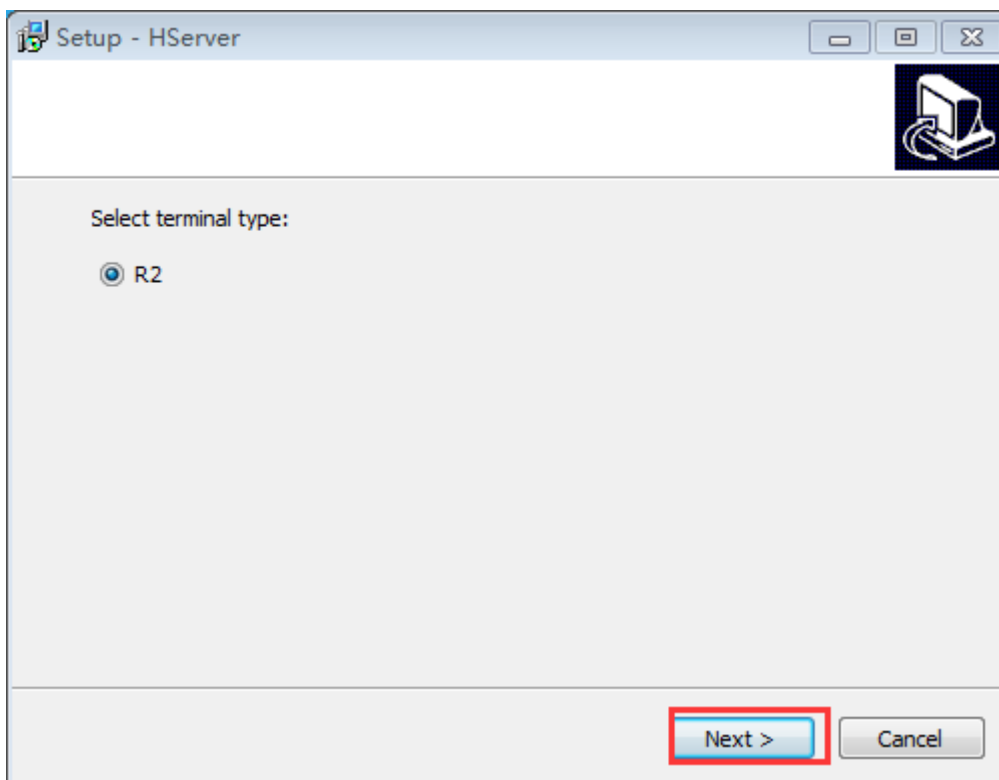
Select corresponding Installation package according Windows OS version. Take Windows 10 Ultimate 64bit as example.

It need super administrator privileges to install Hserver. Please shutdown antivirus software and firewall before installation.

## Cloud Classroom Management Software Installation Instruction

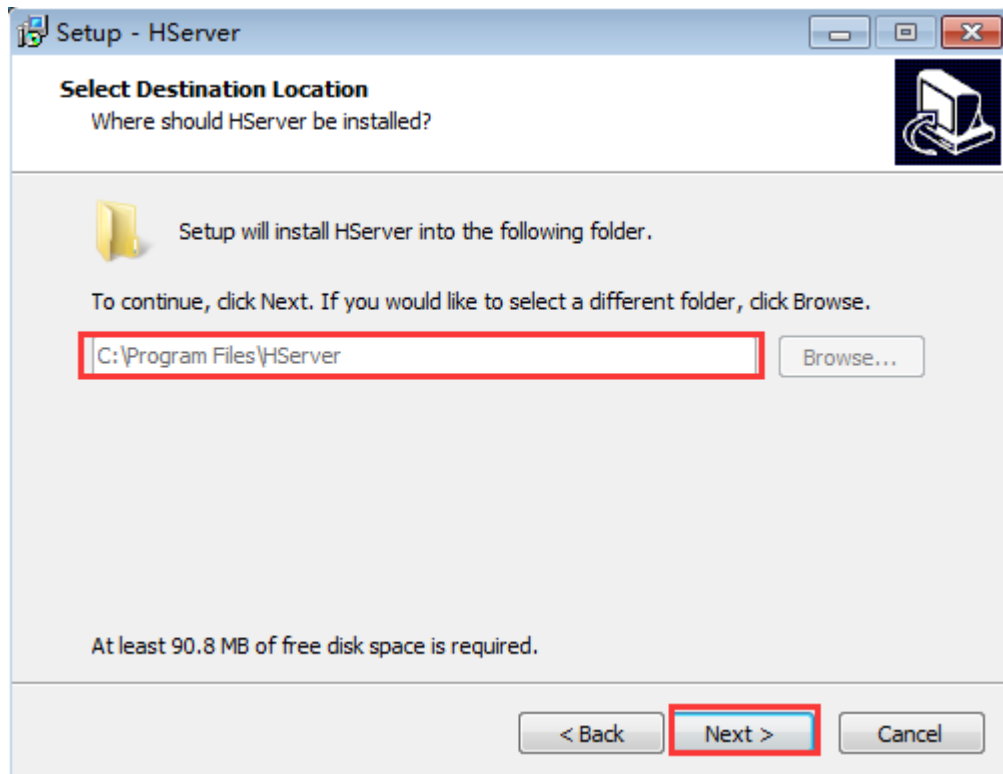


Select corresponding terminal type according to the product model(only R2 at present), and click **Next**.

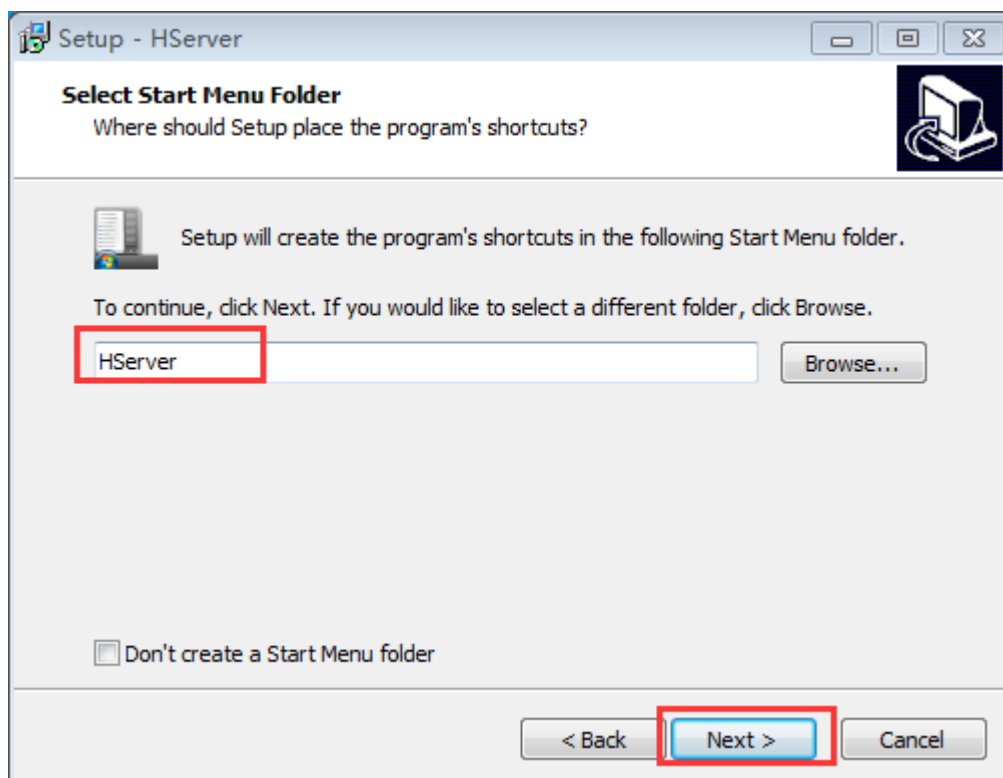


To make sure normal use of the software, the installation location cannot be changed.The default location is C:\Program Files\Hserver folder. Click **Next**.

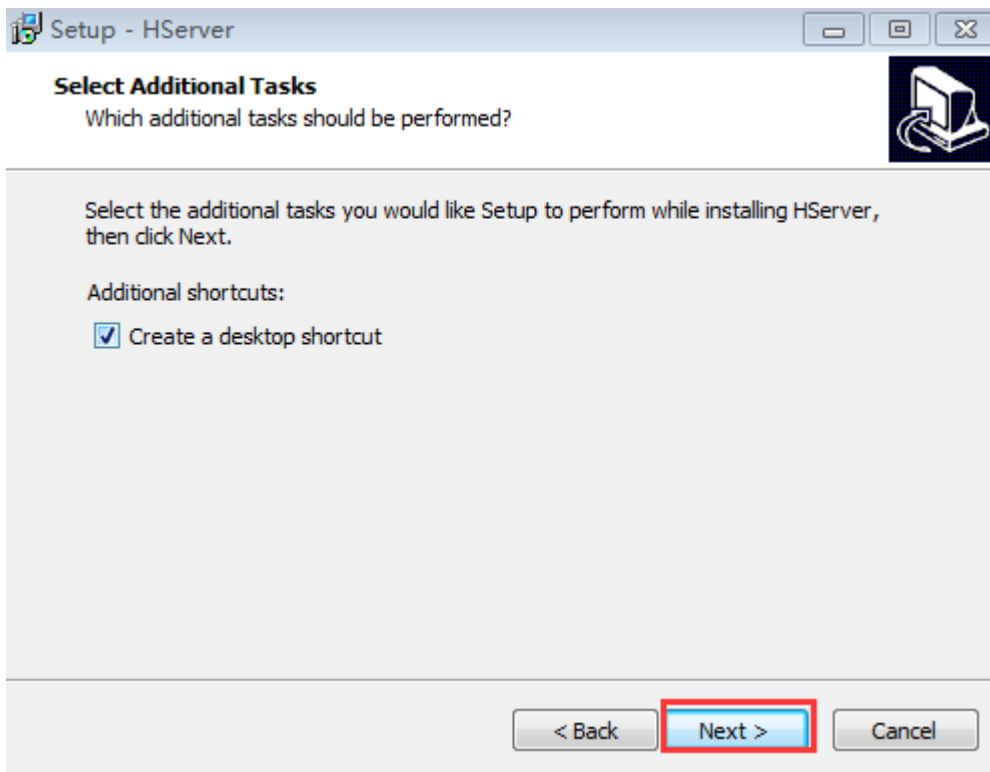
## Cloud Classroom Management Software Installation Instruction



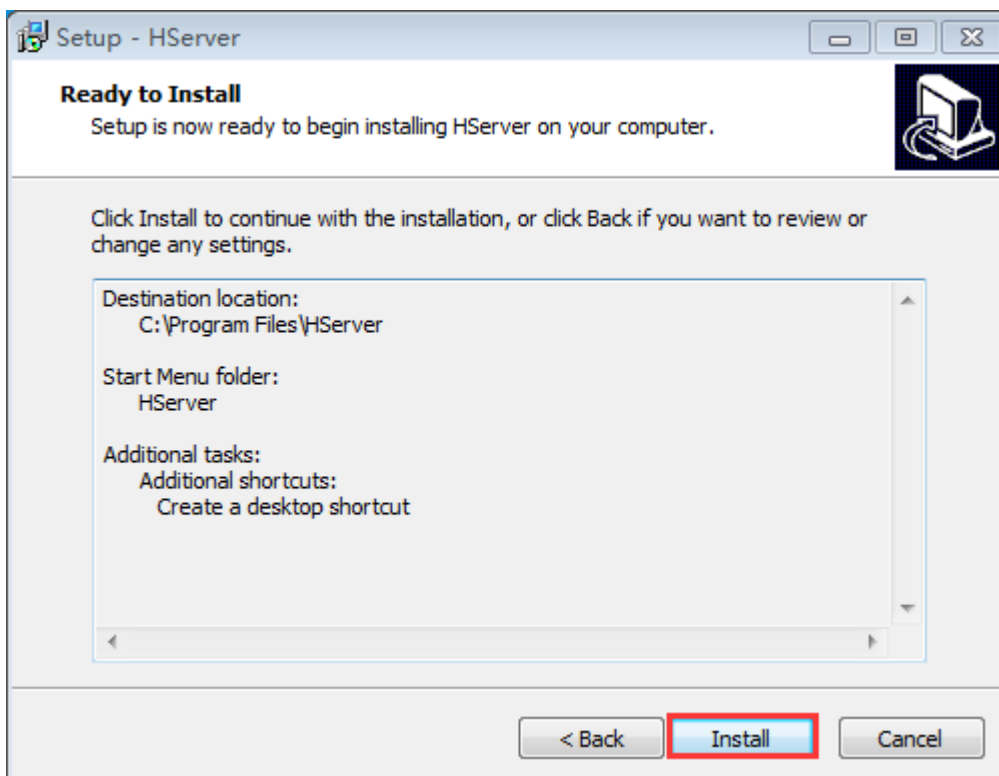
Folder will be created in the start menu by default,click **Next**,create a desktop shortcut by default, click **Next**.



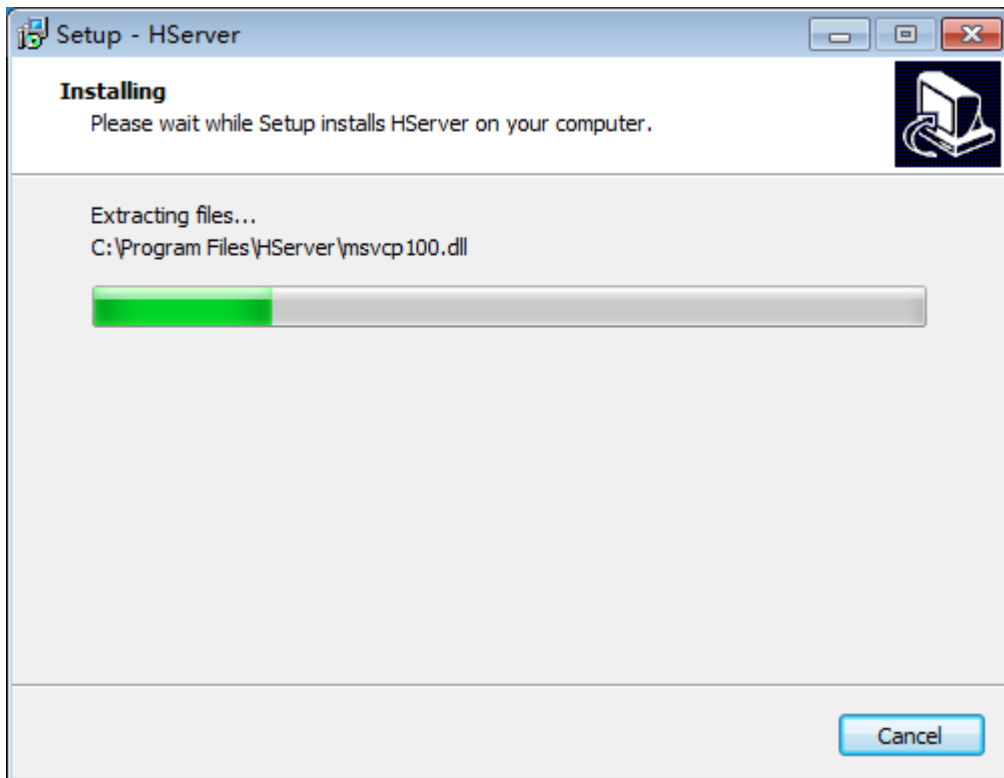
## Cloud Classroom Management Software Installation Instruction



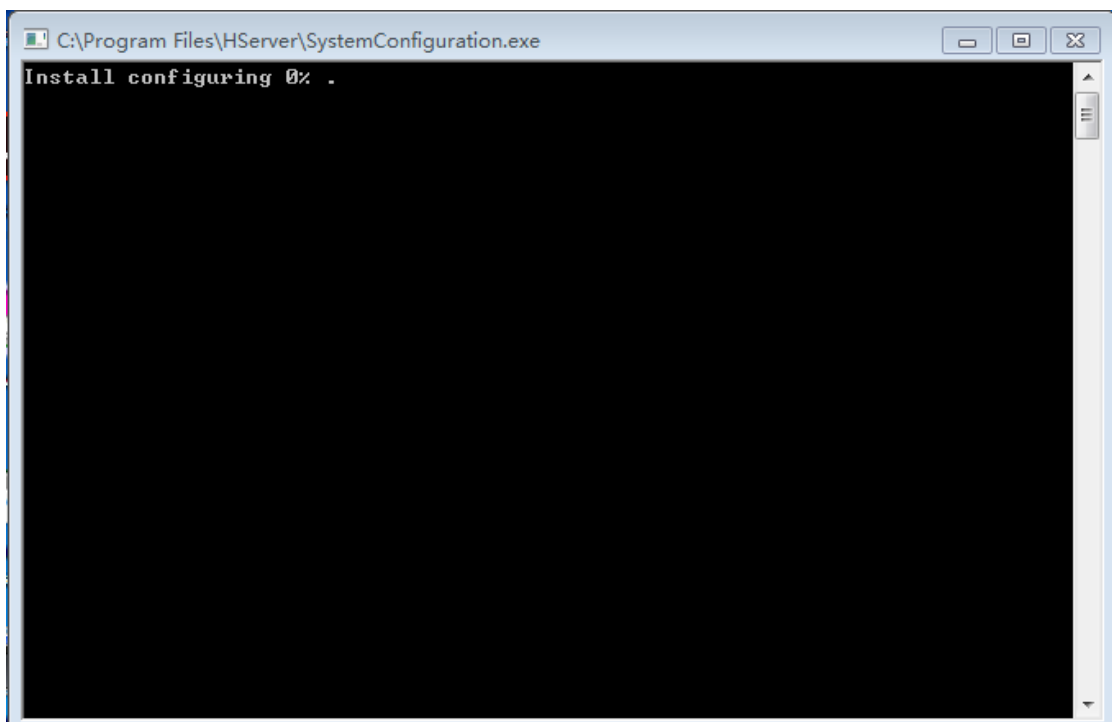
Click **Install**



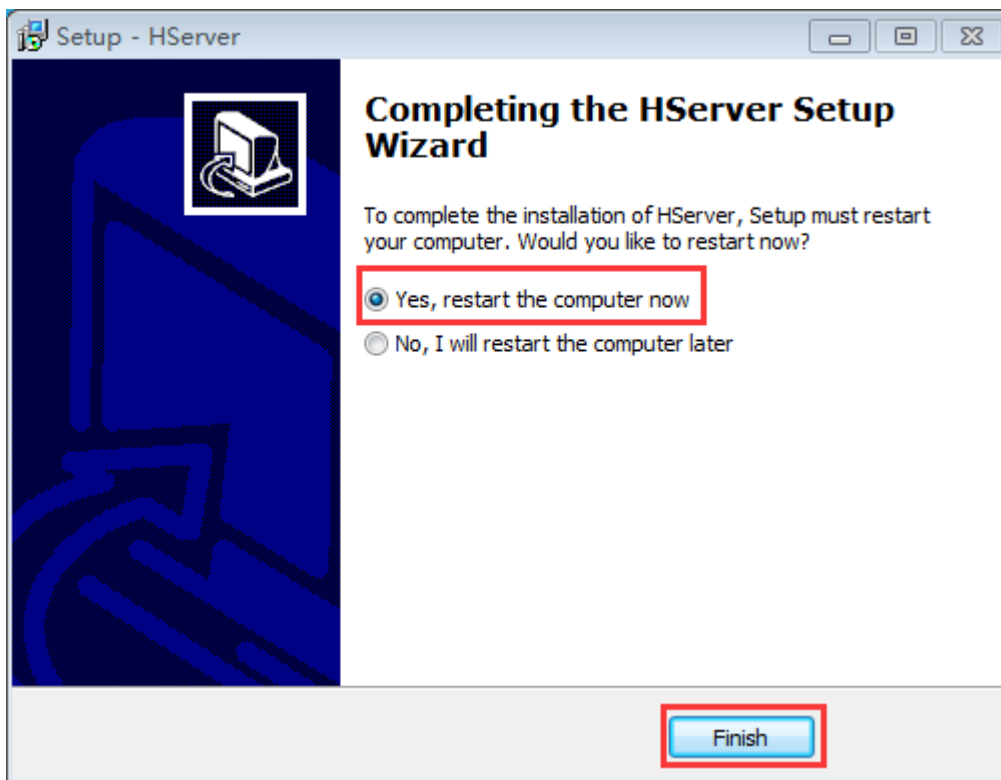
## Cloud Classroom Management Software Installation Instruction



During the installation, there will be a pop-up window showing the installation progress.



## Cloud Classroom Management Software Installation Instruction



After completing the installation, it will restart by default, then click "Finish".