

Rplus Installation

Step 1: Make terminals connect to monitor and other necessary peripherals.

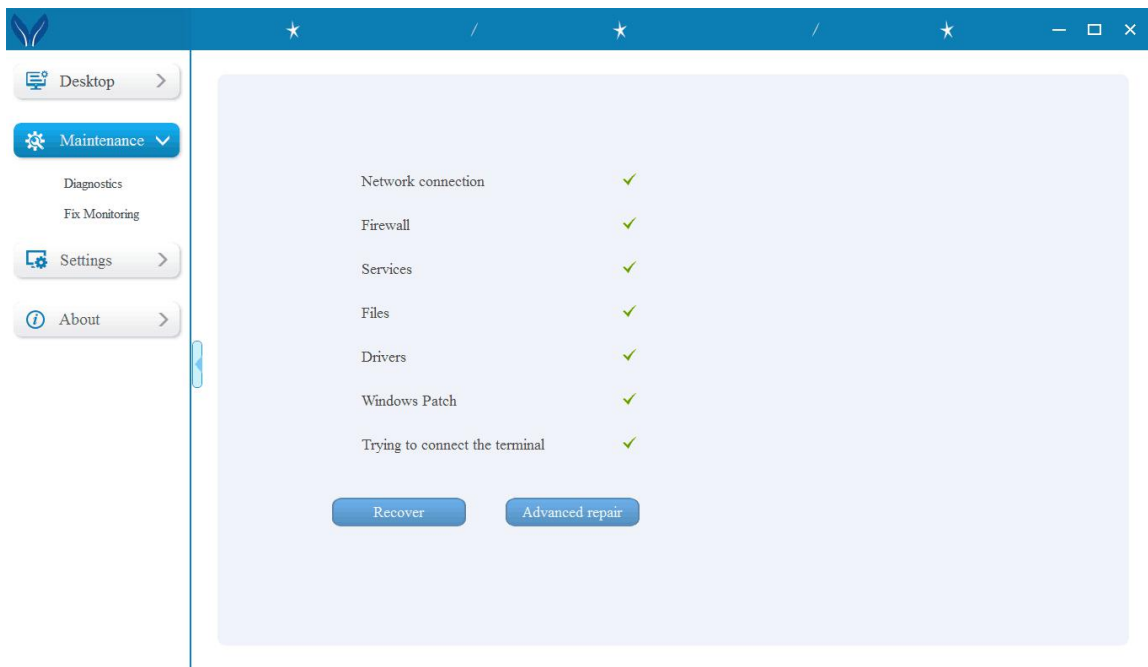
Step 2: Install Hmanager program on server side



Step 3: Set up Hmanager as following.

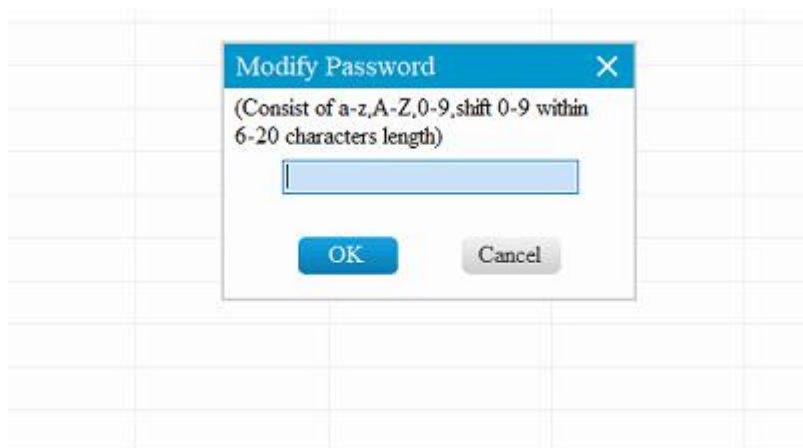
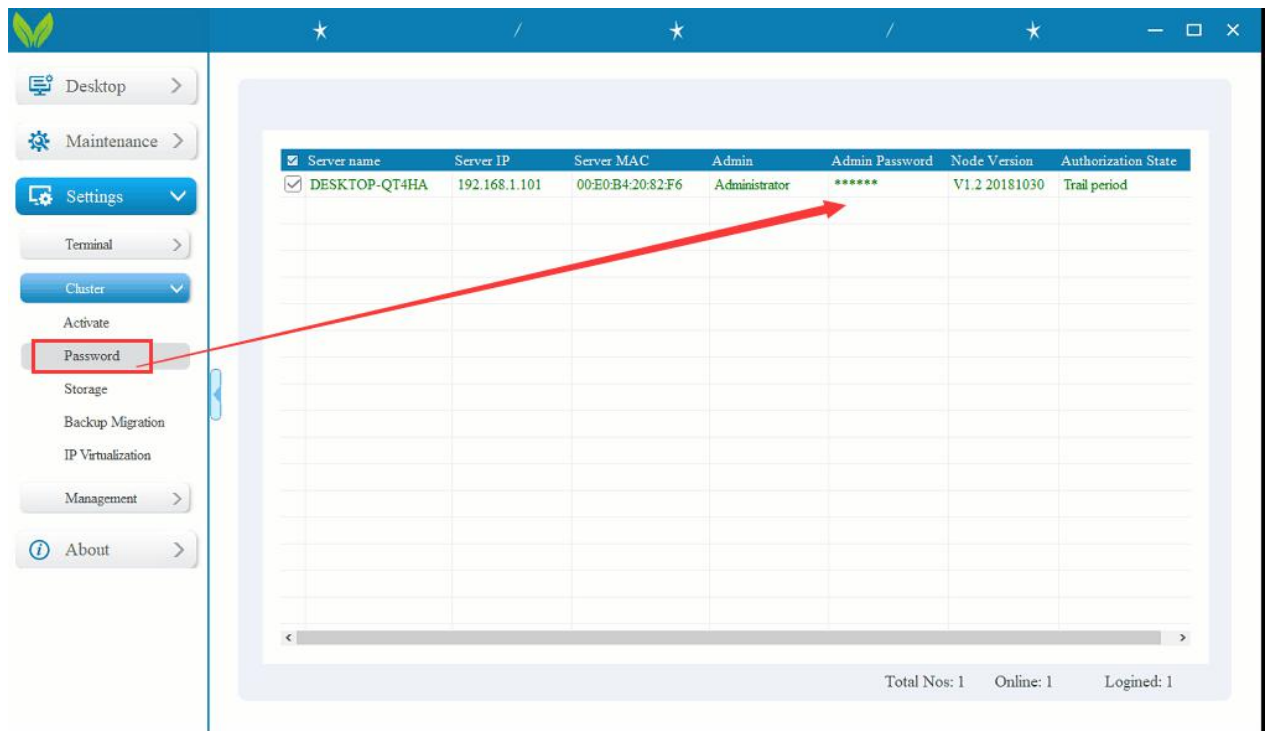
1) Check network environment(①)

Make sure all items with tick mark. One of them failure will cause it disconnected.



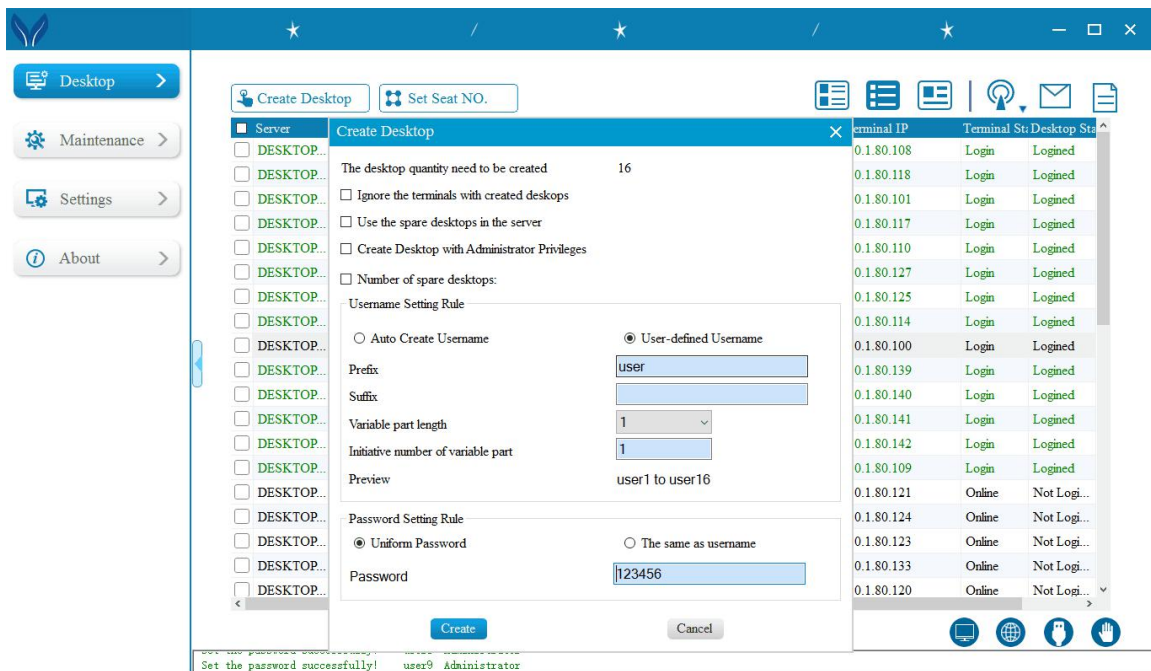
Rplus Installation

2) Modify Password (the default one is admin)



Rplus Installation

3) Create desktop (②)



4) Logon desktop (③)

Choose terminals and right click mouse to logon desktop

